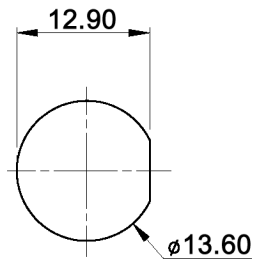
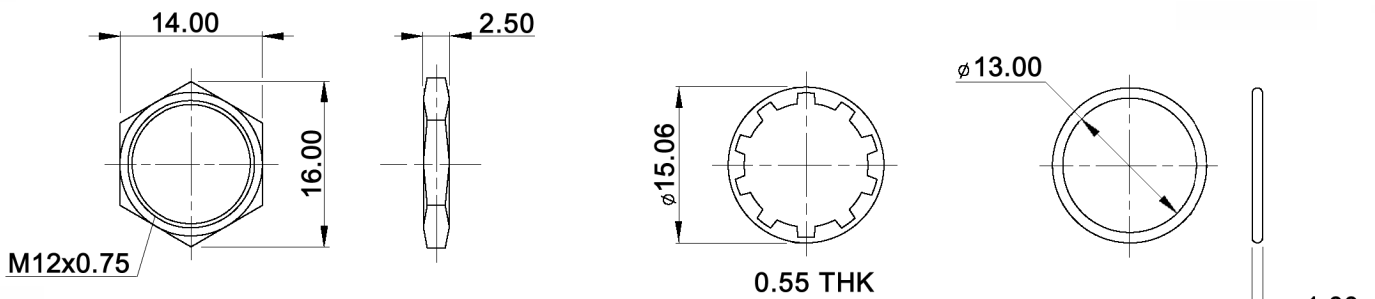


PANEL CUT-OUT



HARDWARE:



Tolerances: 0.00: ±0.25mm 0.0: ±0.40mm	Date	Name
	03/09	dr

DPW 1 AG-x

Rating, electrical life	02/13	dr
Dimensions	06/10	dr
Modifications	Date	Name

knitter-switch

30 17 62

Page

1/2

Specifications:

Contact rating: max. 100mA, 24V DC - endurance 200 000 cycles
 max. 2A, 125VAC - endurance 10 000 cycles

Contact resistance: 100mOhm max.

Insulation resistance: 1GOhm min. at 500V DC

Dielectric strength: 1 000V AC RMS

Operating force: 4.5 - 6.5N

Torque: 1.5Nm max. applied to nut

Soldering conditions: 350°C max., 5sec.

Panel thickness: min.: 1.5mm; max.: 4.0mm

Total travel: 2.5mm

Switching function: off - on

Contact bounce: 10ms

Material: Case / cap / bushing: polyamide 6/6
 Terminal / contact: gold over silver plated

IP rating: IP 67 (mounted)

X=CAP COLOR	
W	white
K	black
R	red
O	orange
Y	yellow
G	green
B	blue



Tolerances: 0.00: ±0.25mm 0.0: ±0.40mm		Date	Name	<h1>DPW 1 AG-x</h1>
		03/09	dr	
		knitter-switch		<h2>30 17 62</h2>
				Page 2/2
Modifications	Date	Name		